

Product Datasheet

PKD1/2/3 (phospho-Ser738/S742) antibody (orb769664)

Description Rabbit polyclonal antibody to PKD1/2/3 (phospho-Ser738/S742)

Species/Host Rabbit

Reactivity Human, Mouse, Rat

Conjugation Unconjugated

Tested Applications ELISA, IHC-P, WB

Immunogen The antiserum was produced against synthesized peptide derived from human PKD1/2/3/PKC mu around the phosphorylation site of Ser738 and Ser742. AA range:706-755

Preservatives PBS with 0.02% sodium azide and 50% glycerol pH 7.4.

Concentration 1 mg/ml

Storage Maintain refrigerated at 2-8°C for up to 2 weeks. For long term storage store at -20°C in small aliquots to prevent freeze-thaw cycles.

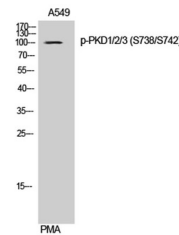
Note For research use only

Isotype IgG

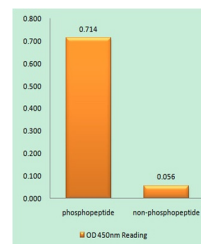
Clonality Polyclonal

MW 101

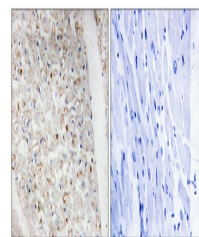
Expiration Date 12 months from date of receipt.



Western Blot analysis of A549 cells usin...



Enzyme-Linked Immunosorbent Assay (Phosp...



Immunohistochemistry analysis of paraffi...