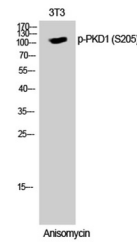


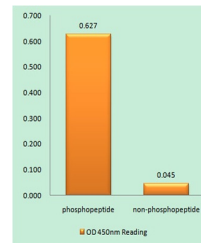
Product Datasheet

PKD1 (phospho-Ser205) antibody (orb769661)

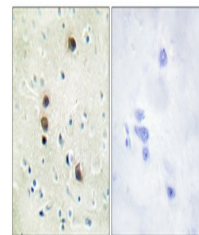
Description	Rabbit polyclonal antibody to PKD1 (phospho-Ser205)
Species/Host	Rabbit
Reactivity	Human, Mouse, Rat
Conjugation	Unconjugated
Tested Applications	ELISA, IHC-P, WB
Immunogen	The antiserum was produced against synthesized peptide derived from human PKD1/PKC mu around the phosphorylation site of Ser205. AA range:171-220
Preservatives	PBS with 0.02% sodium azide and 50% glycerol pH 7.4.
Concentration	1 mg/ml
Storage	Maintain refrigerated at 2-8°C for up to 2 weeks. For long term storage store at -20°C in small aliquots to prevent freeze-thaw cycles.
Note	For research use only
Isotype	IgG
Clonality	Polyclonal
MW	110
Expiration Date	12 months from date of receipt.



Western Blot analysis of 3T3 cells using...



Enzyme-Linked Immunosorbent Assay (Phosp...



Immunohistochemistry analysis of paraffi...