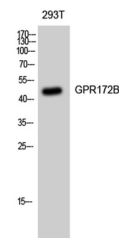


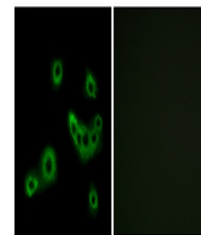
Product Datasheet

GPR172B antibody (orb769577)

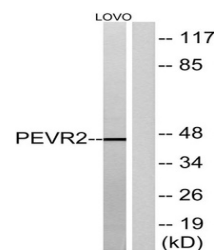
Description	Rabbit polyclonal antibody to GPR172B
Species/Host	Rabbit
Reactivity	Human
Conjugation	Unconjugated
Tested Applications	ELISA, IF, WB
Immunogen	The antiserum was produced against synthesized peptide derived from human PEVR2. AA range:235-284
Preservatives	PBS with 0.02% sodium azide and 50% glycerol pH 7.4.
Concentration	1 mg/ml
Storage	Store at -20°C. Avoid repeated freeze-thaw cycles.
Note	For research use only
Isotype	IgG
Clonality	Polyclonal
MW	46
Expiration Date	12 months from date of receipt.



Western Blot analysis of 293T cells usin...



Immunofluorescence analysis of MCF7 cell...



Western blot analysis of lysates from LO...