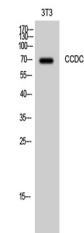


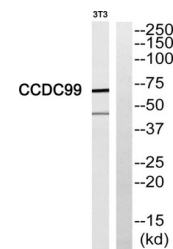
Product Datasheet

CCDC99 antibody (orb769557)

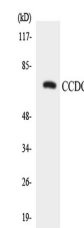
Description	Rabbit polyclonal antibody to CCDC99
Species/Host	Rabbit
Reactivity	Human
Conjugation	Unconjugated
Tested Applications	ELISA, WB
Immunogen	The antiserum was produced against synthesized peptide derived from human CCDC99. AA range:541-590
Preservatives	PBS with 0.02% sodium azide and 50% glycerol pH 7.4.
Concentration	1 mg/ml
Storage	Store at -20°C. Avoid repeated freeze-thaw cycles.
Note	For research use only
Isotype	IgG
Clonality	Polyclonal
MW	70
Expiration Date	12 months from date of receipt.



Western Blot analysis of 3T3 cells using...



Western blot analysis of CCDC99 Antibody...



Western blot analysis of the lysates fro...