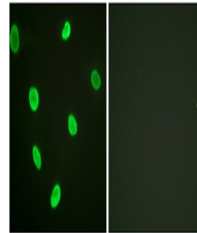


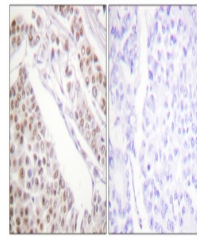
Product Datasheet

Acetyl Histone H2B (K12) antibody (orb769514)

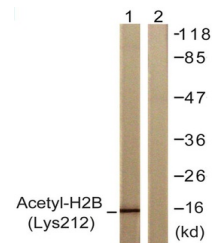
Description	Rabbit polyclonal antibody to Acetyl Histone H2B (K12)
Species/Host	Rabbit
Reactivity	Human, Monkey, Mouse
Conjugation	Unconjugated
Tested Applications	ELISA, IF, IHC-P, WB
Immunogen	The antiserum was produced against synthesized peptide derived from human Histone H2B around the acetylated site of Lys12. AA range:10-59
Preservatives	PBS with 0.02% sodium azide and 50% glycerol pH 7.4.
Concentration	1 mg/ml
Storage	Maintain refrigerated at 2-8°C for up to 2 weeks. For long term storage store at -20°C in small aliquots to prevent freeze-thaw cycles.
Note	For research use only
Isotype	IgG
Clonality	Polyclonal
MW	14
Expiration Date	12 months from date of receipt.



Immunofluorescence analysis of HeLa cell...



Immunohistochemistry analysis of paraffi...



Western blot analysis of lysates from CO...