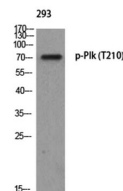


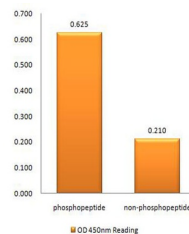
## Product Datasheet

### Plk (phospho-Thr210) antibody (orb769494)

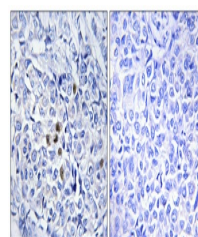
<b>Description</b>	Rabbit polyclonal antibody to Plk (phospho-Thr210)
<b>Species/Host</b>	Rabbit
<b>Reactivity</b>	Human, Mouse, Rat
<b>Conjugation</b>	Unconjugated
<b>Tested Applications</b>	ELISA, IHC-P, WB
<b>Immunogen</b>	The antiserum was produced against synthesized peptide derived from human PLK1 around the phosphorylation site of Thr210. AA range:176-225
<b>Preservatives</b>	PBS with 0.02% sodium azide and 50% glycerol pH 7.4.
<b>Concentration</b>	1 mg/ml
<b>Storage</b>	Store at -20°C. Avoid repeated freeze-thaw cycles.
<b>Note</b>	For research use only
<b>Isotype</b>	IgG
<b>Clonality</b>	Polyclonal
<b>MW</b>	70
<b>Expiration Date</b>	12 months from date of receipt.



Western blot analysis of 293 using p-Plk...



Enzyme-Linked Immunosorbent Assay (Phosp...



Immunohistochemistry analysis of paraffi...