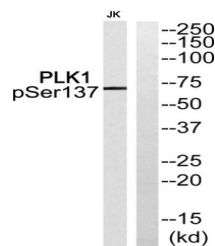


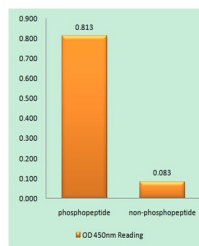
Product Datasheet

Plk1 (phospho-Ser137) antibody (orb769493)

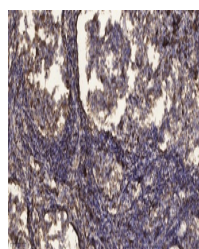
Description	Rabbit polyclonal antibody to Plk1 (phospho-Ser137)
Species/Host	Rabbit
Reactivity	Human, Mouse, Rat
Conjugation	Unconjugated
Tested Applications	ELISA, WB
Immunogen	The antiserum was produced against synthesized peptide derived from human PLK1 around the phosphorylation site of Ser137. AA range:103-152
Preservatives	PBS with 0.02% sodium azide and 50% glycerol pH 7.4.
Concentration	1 mg/ml
Storage	Store at -20°C. Avoid repeated freeze-thaw cycles.
Note	For research use only
Isotype	IgG
Clonality	Polyclonal
MW	68
Expiration Date	12 months from date of receipt.



Western blot analysis of PLK1 (Phospho-Ser137)



Enzyme-Linked Immunosorbent Assay (Phospho-Ser137)



Immunohistochemical analysis of paraffin-embedded tissue