

## Product Datasheet

### PKD2 (phospho-Ser812) antibody (orb769472)

**Description** Rabbit polyclonal antibody to PKD2 (phospho-Ser812)

**Species/Host** Rabbit

**Reactivity** Human, Mouse, Rat

**Conjugation** Unconjugated

**Tested Applications** ELISA, IF

**Immunogen** The antiserum was produced against synthesized peptide derived from human PKD2 around the phosphorylation site of Ser812. AA range:778-827

**Preservatives** PBS with 0.02% sodium azide and 50% glycerol pH 7.4.

**Concentration** 1 mg/ml

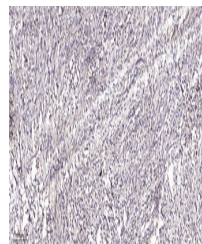
**Storage** Maintain refrigerated at 2-8°C for up to 2 weeks. For long term storage store at -20°C in small aliquots to prevent freeze-thaw cycles.

**Note** For research use only

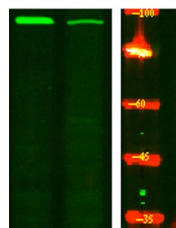
**Isotype** IgG

**Clonality** Polyclonal

**Expiration Date** 12 months from date of receipt.



Immunohistochemical analysis of paraffin...



Western Blot analysis of Hela treated or...