

Product Datasheet

PDK1 (phospho-Ser241) antibody (orb769430)

Description Rabbit polyclonal antibody to PDK1 (phospho-Ser241)

Species/Host Rabbit

Reactivity Human, Mouse, Rat

Conjugation Unconjugated

Tested Applications ELISA, IHC-P, WB

Immunogen The antiserum was produced against synthesized peptide derived from human PDK1 around the phosphorylation site of Ser241. AA range:210-259

Preservatives PBS with 0.02% sodium azide and 50% glycerol pH 7.4.

Concentration 1 mg/ml

Storage Maintain refrigerated at 2-8°C for up to 2 weeks. For long term storage store at -20°C in small aliquots to prevent freeze-thaw cycles.

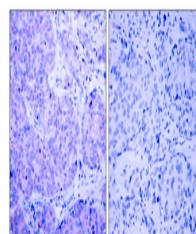
Note For research use only

Isotype IgG

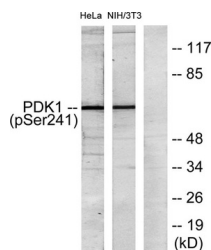
Clonality Polyclonal

MW 63

Expiration Date 12 months from date of receipt.



Immunohistochemistry analysis of paraffi...



Western blot analysis of lysates from He...