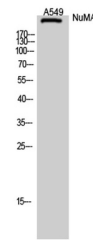


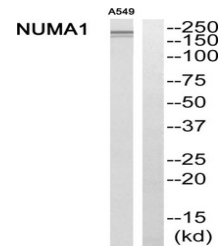
Product Datasheet

NuMA antibody (orb769311)

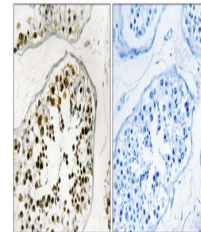
Description	Rabbit polyclonal antibody to NuMA
Species/Host	Rabbit
Reactivity	Human
Conjugation	Unconjugated
Tested Applications	ELISA, IHC-P, WB
Immunogen	The antiserum was produced against synthesized peptide derived from human NUMA1. AA range:334-383
Preservatives	PBS with 0.02% sodium azide and 50% glycerol pH 7.4.
Concentration	1 mg/ml
Storage	Maintain refrigerated at 2-8°C for up to 2 weeks. For long term storage store at -20°C in small aliquots to prevent freeze-thaw cycles.
Note	For research use only
Isotype	IgG
Clonality	Polyclonal
MW	240
Expiration Date	12 months from date of receipt.



Western Blot analysis of A549 cells using...



Western blot analysis of NUMA1 Antibody....



Immunohistochemistry analysis of paraffin...