

Product Datasheet

Na⁺/K⁺-ATPase alpha2 antibody (orb769237)

Description Rabbit polyclonal antibody to Na⁺/K⁺-ATPase alpha2

Species/Host Rabbit

Reactivity Human, Monkey, Mouse, Rat

Conjugation Unconjugated

Tested Applications ELISA, WB

Immunogen The antiserum was produced against synthesized peptide derived from human ATP1A2. AA range:971-1020

Preservatives PBS with 0.02% sodium azide and 50% glycerol pH 7.4.

Concentration 1 mg/ml

Storage Maintain refrigerated at 2-8°C for up to 2 weeks. For long term storage store at -20°C in small aliquots to prevent freeze-thaw cycles.

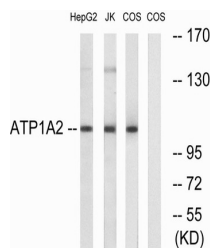
Note For research use only

Isotype IgG

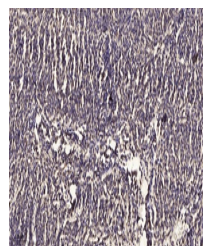
Clonality Polyclonal

MW 112

Expiration Date 12 months from date of receipt.



Western blot analysis of lysates from CO...



Immunohistochemical analysis of paraffin...