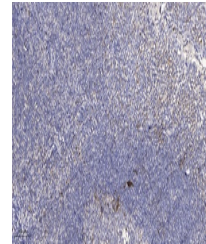


## Product Datasheet

### GCN2 (phospho-Thr899) antibody (orb769145)

<b>Description</b>	Rabbit polyclonal antibody to GCN2 (phospho-Thr899)
<b>Reactivity</b>	Human, Mouse
<b>Conjugation</b>	Unconjugated
<b>Tested Applications</b>	ELISA, IHC-P
<b>Immunogen</b>	The antiserum was produced against synthesized peptide derived from human GCN2 around the phosphorylation site of Thr899. AA range:865-914
<b>Preservatives</b>	PBS with 0.02% sodium azide and 50% glycerol pH 7.4.
<b>Concentration</b>	1 mg/ml
<b>Storage</b>	Maintain refrigerated at 2-8°C for up to 2 weeks. For long term storage store at -20°C in small aliquots to prevent freeze-thaw cycles.
<b>Note</b>	For research use only
<b>Isotype</b>	IgG
<b>Clonality</b>	Polyclonal
<b>Source</b>	Rabbit
<b>MW</b>	187kD
<b>Dilution Range</b>	Immunohistochemistry: 1/100 - 1/300. ELISA: 1/5000. Not yet tested in other applications.
<b>Expiration Date</b>	12 months from date of receipt.



Immunohistochemical analysis of paraffin...