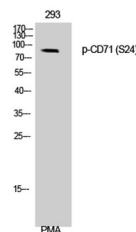


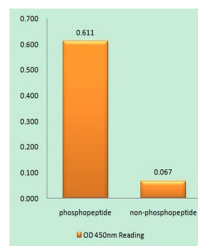
Product Datasheet

CD71 (phospho-Ser24) antibody (orb769075)

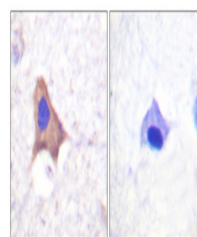
Description	Rabbit polyclonal antibody to CD71 (phospho-Ser24)
Species/Host	Rabbit
Reactivity	Human, Mouse
Conjugation	Unconjugated
Tested Applications	ELISA, IHC-P, WB
Immunogen	The antiserum was produced against synthesized peptide derived from human CD71/TfR around the phosphorylation site of Ser24. AA range:15-64
Preservatives	PBS with 0.02% sodium azide and 50% glycerol pH 7.4.
Concentration	1 mg/ml
Storage	Store at -20°C. Avoid repeated freeze-thaw cycles.
Note	For research use only
Isotype	IgG
Clonality	Polyclonal
MW	89
Expiration Date	12 months from date of receipt.



Western Blot analysis of 293 cells using...



Enzyme-Linked Immunosorbent Assay (Phosp...



Immunohistochemistry analysis of paraffi...