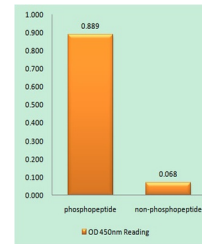


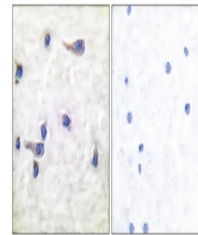
Product Datasheet

Tau (phospho-Thr212) antibody (orb769057)

Description	Rabbit polyclonal antibody to Tau (phospho-Thr212)
Species/Host	Rabbit
Reactivity	Human, Mouse, Rat
Conjugation	Unconjugated
Tested Applications	ELISA, IHC-P
Immunogen	The antiserum was produced against synthesized peptide derived from human Tau around the phosphorylation site of Thr212. AA range:496-545
Preservatives	PBS with 0.02% sodium azide and 50% glycerol pH 7.4.
Concentration	1 mg/ml
Storage	Maintain refrigerated at 2-8°C for up to 2 weeks. For long term storage store at -20°C in small aliquots to prevent freeze-thaw cycles.
Note	For research use only
Isotype	IgG
Clonality	Polyclonal
MW	50-85
Expiration Date	12 months from date of receipt.



Enzyme-Linked
Immunosorbent Assay
(Phosp...



Immunohistochemistry
analysis of paraffi...