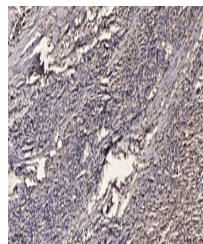


Product Datasheet

Smad2 (phospho-Ser465) antibody (orb769030)

Description	Rabbit polyclonal antibody to Smad2 (phospho-Ser465)
Species/Host	Rabbit
Reactivity	Human, Mouse, Rat
Conjugation	Unconjugated
Tested Applications	ELISA, IHC-P, WB
Immunogen	Synthesized phospho-peptide around the phosphorylation site of human Smad2 (phospho Ser465)
Preservatives	PBS with 0.02% sodium azide and 50% glycerol pH 7.4.
Concentration	1 mg/ml
Storage	Maintain refrigerated at 2-8°C for up to 2 weeks. For long term storage store at -20°C in small aliquots to prevent freeze-thaw cycles.
Note	For research use only
Isotype	IgG
Clonality	Polyclonal
MW	52
Expiration Date	12 months from date of receipt.



Immunohistochemical analysis of paraffin...