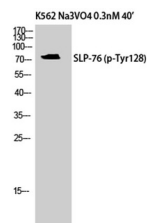


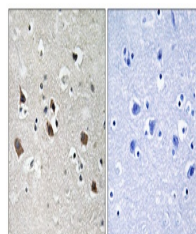
Product Datasheet

SLP-76 (phospho-Tyr128) antibody (orb768974)

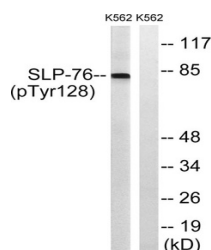
Description	Rabbit polyclonal antibody to SLP-76 (phospho-Tyr128)
Species/Host	Rabbit
Reactivity	Human, Mouse, Rat
Conjugation	Unconjugated
Tested Applications	ELISA, IHC-P, WB
Immunogen	The antiserum was produced against synthesized peptide derived from human SLP-76 around the phosphorylation site of Tyr128. AA range:94-143
Preservatives	PBS with 0.02% sodium azide and 50% glycerol pH 7.4.
Concentration	1 mg/ml
Storage	Maintain refrigerated at 2-8°C for up to 2 weeks. For long term storage store at -20°C in small aliquots to prevent freeze-thaw cycles.
Note	For research use only
Isotype	IgG
Clonality	Polyclonal
MW	75
Expiration Date	12 months from date of receipt.



Western Blot analysis of K562 cells using...



Immunohistochemistry analysis of paraffin...



Western blot analysis of lysates from K5...