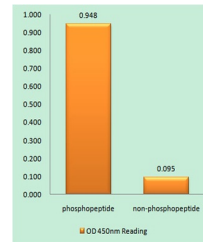


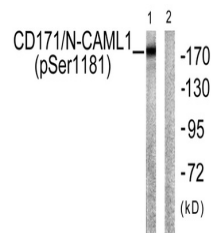
Product Datasheet

NCAM-L1 (phospho-Ser1181) antibody (orb768918)

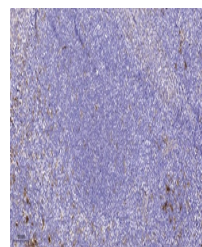
Description	Rabbit polyclonal antibody to NCAM-L1 (phospho-Ser1181)
Species/Host	Rabbit
Reactivity	Human, Mouse, Rat
Conjugation	Unconjugated
Tested Applications	ELISA, IHC-P, WB
Immunogen	The antiserum was produced against synthesized peptide derived from human CD171/N-CAM1 around the phosphorylation site of Ser1181. AA range:1147-1196
Preservatives	PBS with 0.02% sodium azide and 50% glycerol pH 7.4.
Concentration	1 mg/ml
Storage	Maintain refrigerated at 2-8°C for up to 2 weeks. For long term storage store at -20°C in small aliquots to prevent freeze-thaw cycles.
Note	For research use only
Isotype	IgG
Clonality	Polyclonal
MW	180
Expiration Date	12 months from date of receipt.



Enzyme-Linked Immunosorbent Assay (Phosp...



Western blot analysis of lysates from K5...



Immunohistochemical analysis of paraffin...