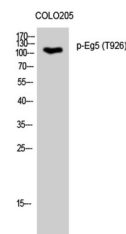


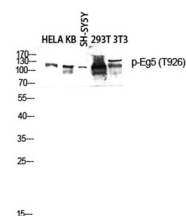
Product Datasheet

Eg5 (phospho-Thr926) antibody (orb768904)

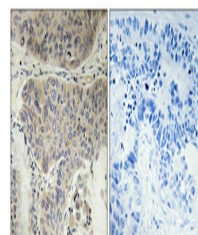
Description	Rabbit polyclonal antibody to Eg5 (phospho-Thr926)
Species/Host	Rabbit
Reactivity	Human
Conjugation	Unconjugated
Tested Applications	ELISA, IHC-P, WB
Immunogen	The antiserum was produced against synthesized peptide derived from human KIF11/Eg5 around the phosphorylation site of Thr926. AA range:892-941
Preservatives	PBS with 0.02% sodium azide and 50% glycerol pH 7.4.
Concentration	1 mg/ml
Storage	Maintain refrigerated at 2-8°C for up to 2 weeks. For long term storage store at -20°C in small aliquots to prevent freeze-thaw cycles.
Note	For research use only
Isotype	IgG
Clonality	Polyclonal
MW	119
Expiration Date	12 months from date of receipt.



Western Blot analysis of COLO205 cells u...



Western blot analysis of HELA KB SH-SY5Y...



Immunohistochemical analysis of paraffin...