

Product Datasheet

KCNQ2/3/4/5 (phospho-Thr217/246/223/251) antibody (orb768888)

Description Rabbit polyclonal antibody to KCNQ2/3/4/5 (phospho-Thr217/246/223/251)

Species/Host Rabbit

Reactivity Human, Mouse, Rat

Conjugation Unconjugated

Tested Applications ELISA, IHC-P

Immunogen The antiserum was produced against synthesized peptide derived from human Kv7.3/KCNQ3 around the phosphorylation site of Thr246. AA range:191-240

Preservatives PBS with 0.02% sodium azide and 50% glycerol pH 7.4.

Concentration 1 mg/ml

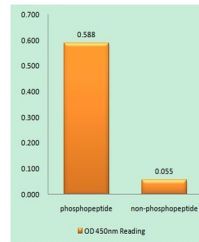
Storage Maintain refrigerated at 2-8°C for up to 2 weeks. For long term storage store at -20°C in small aliquots to prevent freeze-thaw cycles.

Note For research use only

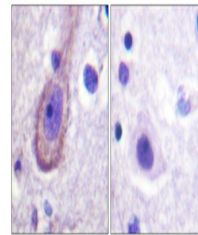
Isotype IgG

Clonality Polyclonal

Expiration Date 12 months from date of receipt.



Enzyme-Linked Immunosorbent Assay (Phosp...



Immunohistochemistry analysis of paraffi...