

## Product Datasheet

### KV2.1 (phospho-Ser805) antibody (orb768866)

**Description** Rabbit polyclonal antibody to KV2.1 (phospho-Ser805)

**Species/Host** Rabbit

**Reactivity** Human, Mouse, Rat

**Conjugation** Unconjugated

**Tested Applications** ELISA, WB

**Immunogen** The antiserum was produced against synthesized peptide derived from human Kv2.1 around the phosphorylation site of Ser805. AA range:771-820

**Preservatives** PBS with 0.02% sodium azide and 50% glycerol pH 7.4.

**Concentration** 1 mg/ml

**Storage** Maintain refrigerated at 2-8°C for up to 2 weeks. For long term storage store at -20°C in small aliquots to prevent freeze-thaw cycles.

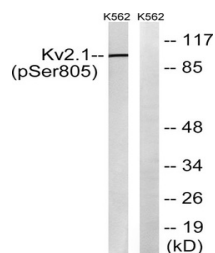
**Note** For research use only

**Isotype** IgG

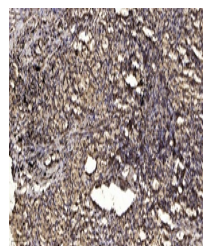
**Clonality** Polyclonal

**MW** 96

**Expiration Date** 12 months from date of receipt.



Western blot analysis of lysates from K5...



Immunohistochemical analysis of paraffin...