

Product Datasheet

Jun D (phospho-Ser255) antibody (orb768861)

Description Rabbit polyclonal antibody to Jun D (phospho-Ser255)

Species/Host Rabbit

Reactivity Human, Mouse, Rat

Conjugation Unconjugated

Tested Applications ELISA, IHC-P, IP, WB

Immunogen The antiserum was produced against synthesized peptide derived from human JunD around the phosphorylation site of Ser255. AA range:222-271

Preservatives PBS with 0.02% sodium azide and 50% glycerol pH 7.4.

Concentration 1 mg/ml

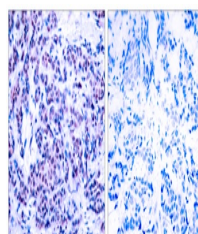
Storage Maintain refrigerated at 2-8°C for up to 2 weeks. For long term storage store at -20°C in small aliquots to prevent freeze-thaw cycles.

Note For research use only

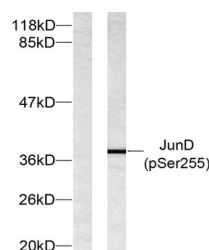
Isotype IgG

Clonality Polyclonal

Expiration Date 12 months from date of receipt.



Immunohistochemistry analysis of paraffi...



Western blot analysis of lysates from 29...