

Product Datasheet

IP3R-I (phospho-Ser1598) antibody (orb768839)

Description Rabbit polyclonal antibody to IP3R-I (phospho-Ser1598)

Species/Host Rabbit

Reactivity Human, Mouse, Rat

Conjugation Unconjugated

Tested Applications ELISA, IF, IHC-P

Immunogen The antiserum was produced against synthesized peptide derived from human Inositol 1,4,5-trisphosphate R1 around the phosphorylation site of Ser1598/1588. AA range:1566-1615

Preservatives PBS with 0.02% sodium azide and 50% glycerol pH 7.4.

Concentration 1 mg/ml

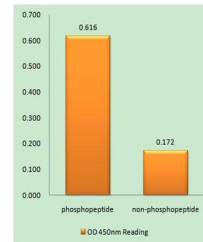
Storage Maintain refrigerated at 2-8°C for up to 2 weeks. For long term storage store at -20°C in small aliquots to prevent freeze-thaw cycles.

Note For research use only

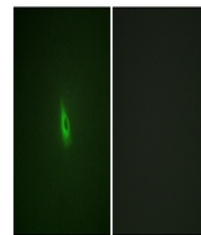
Isotype IgG

Clonality Polyclonal

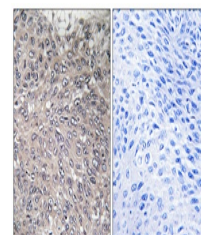
Expiration Date 12 months from date of receipt.



Enzyme-Linked Immunosorbent Assay (Phosp...



Immunofluorescence analysis of A549 cell...



Immunohistochemistry analysis of paraffi...