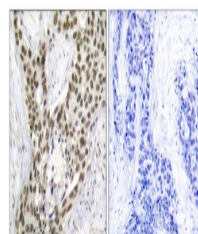


Product Datasheet

AR (phospho-Ser213) antibody (orb768809)

Description	Rabbit polyclonal antibody to AR (phospho-Ser213)
Species/Host	Rabbit
Reactivity	Human
Conjugation	Unconjugated
Tested Applications	ELISA, IHC-P
Immunogen	The antiserum was produced against synthesized peptide derived from human Androgen Receptor around the phosphorylation site of Ser213. AA range:186-235
Preservatives	PBS with 0.02% sodium azide and 50% glycerol pH 7.4.
Concentration	1 mg/ml
Storage	Maintain refrigerated at 2-8°C for up to 2 weeks. For long term storage store at -20°C in small aliquots to prevent freeze-thaw cycles.
Note	For research use only
Isotype	IgG
Clonality	Polyclonal
Expiration Date	12 months from date of receipt.



Immunohistochemistry analysis of paraffi...