

## Product Datasheet

### IL8R beta (phospho-Ser347) antibody (orb768761)

**Description** Rabbit polyclonal antibody to IL8R beta (phospho-Ser347)

**Species/Host** Rabbit

**Reactivity** Human, Mouse

**Conjugation** Unconjugated

**Tested Applications** ELISA, IF, IHC-P, WB

**Immunogen** The antiserum was produced against synthesized peptide derived from human IL-8R beta/CDw128 beta around the phosphorylation site of Ser347. AA range:311-360

**Preservatives** PBS with 0.02% sodium azide and 50% glycerol pH 7.4.

**Concentration** 1 mg/ml

**Storage** Store at -20°C. Avoid repeated freeze-thaw cycles.

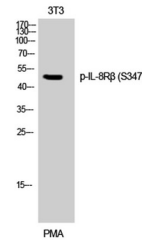
**Note** For research use only

**Isotype** IgG

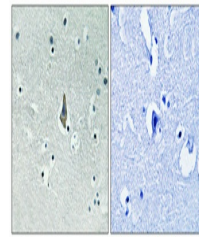
**Clonality** Polyclonal

**MW** 48

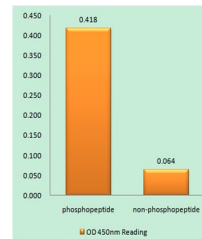
**Expiration Date** 12 months from date of receipt.



Western Blot analysis of 3T3 cells using...



Immunohistochemical analysis of paraffin...



Enzyme-Linked Immunosorbent Assay (Phosp...