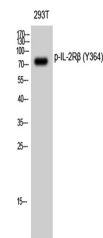


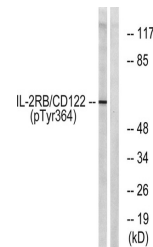
Product Datasheet

IL2R beta (phospho-Tyr364) antibody (orb768748)

Description	Rabbit polyclonal antibody to IL2R beta (phospho-Tyr364)
Species/Host	Rabbit
Reactivity	Human, Monkey, Mouse, Rat
Conjugation	Unconjugated
Tested Applications	ELISA, WB
Immunogen	The antiserum was produced against synthesized peptide derived from human IL-2R beta/CD122 around the phosphorylation site of Tyr364. AA range:331-380
Preservatives	PBS with 0.02% sodium azide and 50% glycerol pH 7.4.
Concentration	1 mg/ml
Storage	Maintain refrigerated at 2-8°C for up to 2 weeks. For long term storage store at -20°C in small aliquots to prevent freeze-thaw cycles.
Note	For research use only
Isotype	IgG
Clonality	Polyclonal
MW	75
Expiration Date	12 months from date of receipt.



Western Blot analysis of 293T cells usin...



Western blot analysis of lysates from CO...