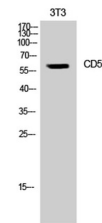


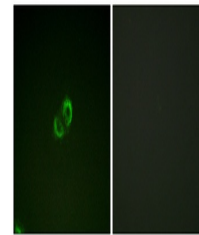
Product Datasheet

CD50 antibody (orb768686)

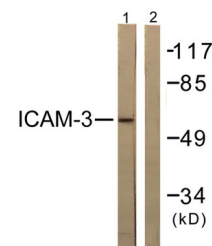
Description	Rabbit polyclonal antibody to CD50
Species/Host	Rabbit
Reactivity	Human
Conjugation	Unconjugated
Tested Applications	ELISA, IF, WB
Immunogen	The antiserum was produced against synthesized peptide derived from human CD50/ICAM-3. AA range:484-533
Preservatives	PBS with 0.02% sodium azide and 50% glycerol pH 7.4.
Concentration	1 mg/ml
Storage	Store at -20°C. Avoid repeated freeze-thaw cycles.
Note	For research use only
Isotype	IgG
Clonality	Polyclonal
MW	42-60
Expiration Date	12 months from date of receipt.



Western Blot analysis of NIH-3T3 cells u...



Immunofluorescence analysis of A549 cell...



Western blot analysis of lysates from NI...