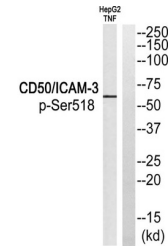


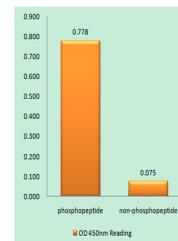
Product Datasheet

CD50 (phospho-Ser518) antibody (orb768685)

Description	Rabbit polyclonal antibody to CD50 (phospho-Ser518)
Species/Host	Rabbit
Reactivity	Human
Conjugation	Unconjugated
Tested Applications	ELISA, WB
Immunogen	The antiserum was produced against synthesized peptide derived from human CD50/ICAM-3 around the phosphorylation site of Ser518. AA range:484-533
Preservatives	PBS with 0.02% sodium azide and 50% glycerol pH 7.4.
Concentration	1 mg/ml
Storage	Maintain refrigerated at 2-8°C for up to 2 weeks. For long term storage store at -20°C in small aliquots to prevent freeze-thaw cycles.
Note	For research use only
Isotype	IgG
Clonality	Polyclonal
MW	42-60
Expiration Date	12 months from date of receipt.



Western blot analysis of CD50/ICAM-3 (Ph...



Enzyme-Linked Immunosorbent Assay (Phosp...