

Product Datasheet

HSF1 (phospho-Ser303) antibody (orb768653)

Description Rabbit polyclonal antibody to HSF1 (phospho-Ser303)

Species/Host Rabbit

Reactivity Human, Mouse

Conjugation Unconjugated

Tested Applications ELISA, IF, IHC-P, WB

Immunogen The antiserum was produced against synthesized peptide derived from human HSF1 around the phosphorylation site of Ser303. AA range:270-319

Preservatives PBS with 0.02% sodium azide and 50% glycerol pH 7.4.

Concentration 1 mg/ml

Storage Maintain refrigerated at 2-8°C for up to 2 weeks. For long term storage store at -20°C in small aliquots to prevent freeze-thaw cycles.

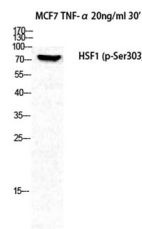
Note For research use only

Isotype IgG

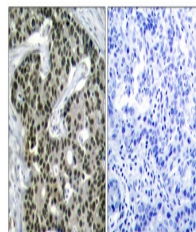
Clonality Polyclonal

MW 82

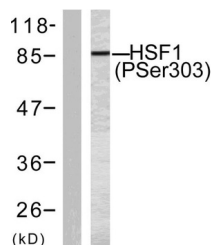
Expiration Date 12 months from date of receipt.



Western Blot analysis of MCF7 + TNF cell...



Immunohistochemistry analysis of paraffi...



Western blot analysis of lysates from MC...