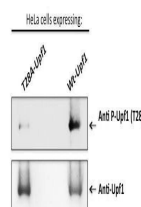


Product Datasheet

FANCD2 (phospho-Ser717) antibody (orb7685)

Description	Rabbit monoclonal antibody to FANCD2 (phospho-Ser717)
Species/Host	Rabbit
Reactivity	Human
Conjugation	Unconjugated
Tested Applications	ELISA, WB
Immunogen	Synthetic peptide linked to KLH
Target	FANCD2 (pSer717)
Preservatives	Purified antibody containing PBS + 0.09% sodium azide
Concentration	0.6mg/ml
Note	For research use only
Clonality	Monoclonal
Dilution Range	Optimal antibody dilution should be determined by titration, however as a guideline start at 1µg/ml for western blot
Expiration Date	12 months from date of receipt.



Western blot analysis of using FANCD2 (p...