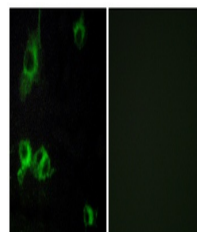


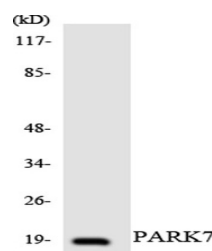
## Product Datasheet

### Laminin alpha-1 antibody (orb768469)

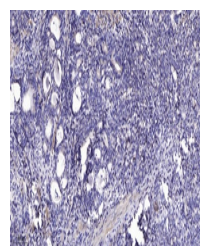
|                            |   |
|----------------------------|---|
| <b>Description</b>         | Rabbit polyclonal antibody to Laminin alpha-1   |
| <b>Species/Host</b>        | Rabbit  |
| <b>Reactivity</b>          | Human   |
| <b>Conjugation</b>         | Unconjugated  |
| <b>Tested Applications</b> | ELISA, IF   |
| <b>Immunogen</b>           | The antiserum was produced against synthesized peptide derived from human LAMA1. AA range:2501-2550                                     |
| <b>Preservatives</b>       | PBS with 0.02% sodium azide and 50% glycerol pH 7.4.  |
| <b>Concentration</b>       | 1 mg/ml   |
| <b>Storage</b>             | Maintain refrigerated at 2-8°C for up to 2 weeks. For long term storage store at -20°C in small aliquots to prevent freeze-thaw cycles. |
| <b>Note</b>                | For research use only   |
| <b>Isotype</b>             | IgG   |
| <b>Clonality</b>           | Polyclonal  |
| <b>Expiration Date</b>     | 12 months from date of receipt.   |



Immunofluorescence analysis of COS7 cell...



Western blot analysis of the lysates fro...



Immunohistochemical analysis of paraffin...