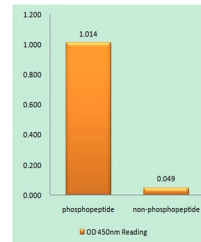


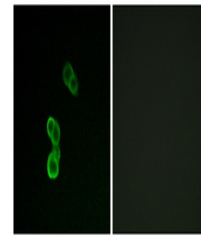
Product Datasheet

GAP-43 (phospho-Ser41) antibody (orb768331)

| | |
|----------------------------|---|
| Description | Rabbit polyclonal antibody to GAP-43 (phospho-Ser41) |
| Species/Host | Rabbit |
| Reactivity | Human, Mouse, Rat |
| Conjugation | Unconjugated |
| Tested Applications | ELISA, IF |
| Immunogen | The antiserum was produced against synthesized peptide derived from human GAP43 around the phosphorylation site of Ser41. AA range:8-57 |
| Preservatives | PBS with 0.02% sodium azide and 50% glycerol pH 7.4. |
| Concentration | 1 mg/ml |
| Storage | Maintain refrigerated at 2-8°C for up to 2 weeks. For long term storage store at -20°C in small aliquots to prevent freeze-thaw cycles. |
| Note | For research use only |
| Isotype | IgG |
| Clonality | Polyclonal |
| Expiration Date | 12 months from date of receipt. |



Enzyme-Linked Immunosorbent Assay (Phosp...



Immunofluorescence analysis of MCF-7 cel...