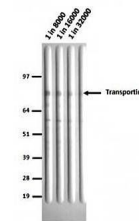


## Product Datasheet

### Transportin1 antibody (orb76827)

<b>Description</b>	Mouse monoclonal antibody to Transportin1
<b>Species/Host</b>	Mouse
<b>Reactivity</b>	Human, Monkey, Mouse, Rabbit
<b>Conjugation</b>	Unconjugated
<b>Tested Applications</b>	ELISA, FC, ICC, IHC-P, IP, WB
<b>Immunogen</b>	Recombinant his tagged transportin 1 (Human)
<b>Target</b>	Transportin 1
<b>Preservatives</b>	Purified antibody (from supernatant) containing PBS 0.1% sodium azide
<b>Concentration</b>	1mg/ml
<b>Note</b>	For research use only
<b>Application notes</b>	SP2/0
<b>Isotype</b>	IgG1
<b>Clonality</b>	Monoclonal
<b>Uniprot ID</b>	<a href="#">Q92973</a> , <a href="#">Q8BFY9</a>
<b>Entrez</b>	<a href="#">238799</a> , <a href="#">3842</a>
<b>Dilution Range</b>	Optimal antibody dilution should be determined by titration, however as a guideline try; Flow Cyt: Use 1µg for 10 <sup>6</sup> cells. ICC/IF: Use a concentration of 5 µg/ml IHC-P: Use a concentration of 1 µg/ml. Perform heat mediated antigen retrieval with citrate buffer pH 6 before commencing with IHC staining protocol. WB: 1:8000. Detects a band of approximately 93 kDa (predicted molecular weight: 107 kDa)
<b>Expiration Date</b>	12 months from date of receipt.



Western blot analysis of Hela lysate using...