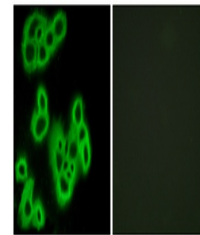


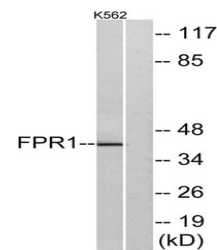
Product Datasheet

FPR1 antibody (orb768236)

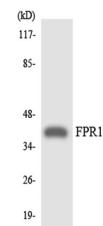
Description	Rabbit polyclonal antibody to FPR1
Species/Host	Rabbit
Reactivity	Human
Conjugation	Unconjugated
Tested Applications	ELISA, IF, IHC-P, WB
Immunogen	The antiserum was produced against synthesized peptide derived from human FPR1. AA range:155-204
Preservatives	PBS with 0.02% sodium azide and 50% glycerol pH 7.4.
Concentration	1 mg/ml
Storage	Maintain refrigerated at 2-8°C for up to 2 weeks. For long term storage store at -20°C in small aliquots to prevent freeze-thaw cycles.
Note	For research use only
Isotype	IgG
Clonality	Polyclonal
MW	40
Expiration Date	12 months from date of receipt.



Immunofluorescence analysis of MCF7 cell...



Western blot analysis of lysates from K5...



Western blot analysis of the lysates fro...