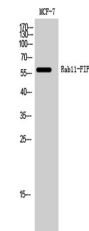


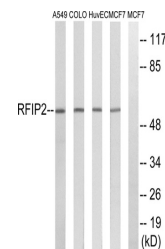
Product Datasheet

Rab11-FIP2 antibody (orb768134)

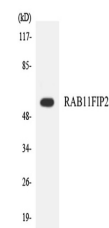
Description	Rabbit polyclonal antibody to Rab11-FIP2
Species/Host	Rabbit
Reactivity	Human, Mouse
Conjugation	Unconjugated
Tested Applications	ELISA, WB
Immunogen	The antiserum was produced against synthesized peptide derived from human RAB11FIP2. AA range:340-389
Preservatives	PBS with 0.02% sodium azide and 50% glycerol pH 7.4.
Concentration	1 mg/ml
Storage	Store at -20°C. Avoid repeated freeze-thaw cycles.
Note	For research use only
Isotype	IgG
Clonality	Polyclonal
MW	58
Expiration Date	12 months from date of receipt.



Western Blot analysis of MCF-7 cells using...



Western blot analysis of lysates from MCF...



Western blot analysis of the lysates from...