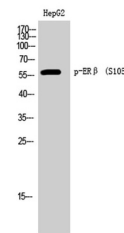


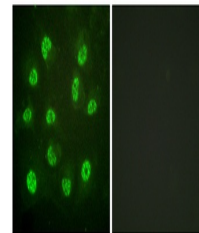
Product Datasheet

ER beta (phospho-Ser105) antibody (orb768052)

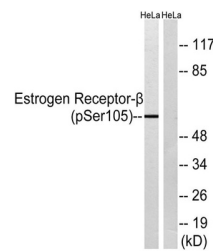
Description	Rabbit polyclonal antibody to ER beta (phospho-Ser105)
Species/Host	Rabbit
Reactivity	Human, Mouse, Rat
Conjugation	Unconjugated
Tested Applications	ELISA, IF, WB
Immunogen	The antiserum was produced against synthesized peptide derived from human Estrogen Receptor-beta around the phosphorylation site of Ser105. AA range:71-120
Preservatives	PBS with 0.02% sodium azide and 50% glycerol pH 7.4.
Concentration	1 mg/ml
Storage	Maintain refrigerated at 2-8°C for up to 2 weeks. For long term storage store at -20°C in small aliquots to prevent freeze-thaw cycles.
Note	For research use only
Isotype	IgG
Clonality	Polyclonal
MW	59
Expiration Date	12 months from date of receipt.



Western Blot analysis of HepG2 cells usi...



Immunofluorescence analysis of HUVEC cel...



Western blot analysis of lysates from He...