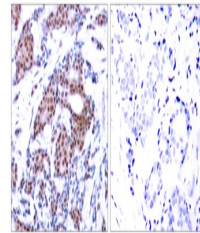


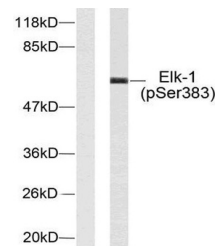
Product Datasheet

Elk-1 (phospho-Ser383) antibody (orb767968)

| | |
|----------------------------|--|
| Description | Rabbit polyclonal antibody to Elk-1 (phospho-Ser383) |
| Species/Host | Rabbit |
| Reactivity | Human, Mouse, Rat |
| Conjugation | Unconjugated |
| Tested Applications | ELISA, IHC-P, IP, WB |
| Immunogen | The antiserum was produced against synthesized peptide derived from human Elk1 around the phosphorylation site of Ser383. AA range:351-400 |
| Preservatives | PBS with 0.02% sodium azide and 50% glycerol pH 7.4. |
| Concentration | 1 mg/ml |
| Storage | Maintain refrigerated at 2-8°C for up to 2 weeks. For long term storage store at -20°C in small aliquots to prevent freeze-thaw cycles. |
| Note | For research use only |
| Isotype | IgG |
| Clonality | Polyclonal |
| Expiration Date | 12 months from date of receipt. |



Immunohistochemistry analysis of paraffi...



Western blot analysis of lysates from He...