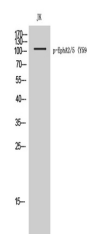


Product Datasheet

EphA2/5 (phospho-Tyr594) antibody (orb767948)

Description	Rabbit polyclonal antibody to EphA2/5 (phospho-Tyr594)
Species/Host	Rabbit
Reactivity	Human, Mouse
Conjugation	Unconjugated
Tested Applications	ELISA, WB
Immunogen	Synthesized phospho-peptide around the phosphorylation site of human EphA2/5 (phospho Tyr594)
Preservatives	PBS with 0.02% sodium azide and 50% glycerol pH 7.4.
Concentration	1 mg/ml
Storage	Maintain refrigerated at 2-8°C for up to 2 weeks. For long term storage store at -20°C in small aliquots to prevent freeze-thaw cycles.
Note	For research use only
Isotype	IgG
Clonality	Polyclonal
MW	110
Expiration Date	12 months from date of receipt.



Western Blot analysis of JK cells using ...