

Product Datasheet

Ephrin-B1/2/3 (phospho-Tyr324) antibody (orb767922)

Description Rabbit polyclonal antibody to Ephrin-B1/2/3 (phospho-Tyr324)

Species/Host Rabbit

Reactivity Human, Mouse, Rat

Conjugation Unconjugated

Tested Applications ELISA, IHC-P, WB

Immunogen The antiserum was produced against synthesized peptide derived from human Ephrin B1/B2/B3 around the phosphorylation site of Tyr324. AA range:290-339

Preservatives PBS with 0.02% sodium azide and 50% glycerol pH 7.4.

Concentration 1 mg/ml

Storage Maintain refrigerated at 2-8°C for up to 2 weeks. For long term storage store at -20°C in small aliquots to prevent freeze-thaw cycles.

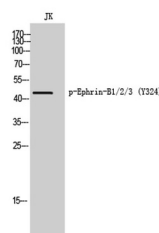
Note For research use only

Isotype IgG

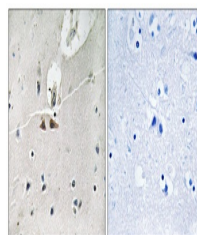
Clonality Polyclonal

MW 46

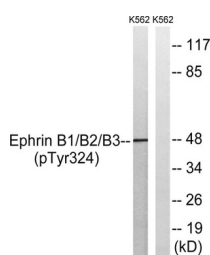
Expiration Date 12 months from date of receipt.



Western Blot analysis of JK cells using ...



Immunohistochemistry analysis of paraffi...



Western blot analysis of lysates from K5...