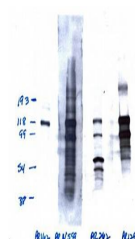


Product Datasheet

Progesterone Receptor Phospho antibody (orb76786)

Description	Mouse monoclonal antibody to Progesterone Receptor Phospho
Species/Host	Mouse
Reactivity	Human, Mouse
Conjugation	Unconjugated
Tested Applications	IP, WB
Immunogen	Phosphopeptide to human progesterone receptor (PR) : (aa 156-169 ATQRVLS(PO3)PLMSRSG)
Target	Progesterone Receptor (Phospho S162)
Preservatives	Purified antibody containing PBS 0.1% sodium azide
Concentration	1mg/ml
Note	For research use only
Application notes	FoxNY (mouse myeloma from Balb/c origin)
Isotype	IgG1
Clonality	Monoclonal
Uniprot ID	P06401 , Q00175
Entrez	18667 , 5241
Dilution Range	Optimal antibody dilution should be determined by titration, however as a guideline use at 5-10ug/ml
Expiration Date	12 months from date of receipt.



Western blot analysis of T47D nuclear ex...