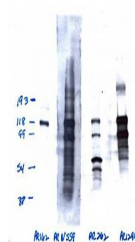


## Product Datasheet

# Progesterone Receptor Phospho antibody (orb76785)

<b>Description</b>	Mouse monoclonal antibody to Progesterone Receptor Phospho
<b>Species/Host</b>	Mouse
<b>Reactivity</b>	Human, Mouse
<b>Conjugation</b>	Unconjugated
<b>Tested Applications</b>	IP, WB
<b>Immunogen</b>	Phosphopeptide to human progesterone receptor (PR) : (aa 156-169 ATQRVLS(PO3)PLMSRSG )
<b>Target</b>	Progesterone Receptor (Phospho S162)
<b>Preservatives</b>	Purified antibody containing PBS 0.1% sodium azide
<b>Concentration</b>	1mg/ml
<b>Note</b>	For research use only
<b>Application notes</b>	FoxNY ( mouse myeloma from Balb/c origin)
<b>Isotype</b>	IgG1
<b>Clonality</b>	Monoclonal
<b>Uniprot ID</b>	<a href="#">P06401</a> , <a href="#">Q00175</a>
<b>Entrez</b>	<a href="#">18667</a> , <a href="#">5241</a>
<b>Dilution Range</b>	Optimal antibody dilution should be determined by titration, however as a guideline use at 5-10ug/ml
<b>Expiration Date</b>	12 months from date of receipt.



Western blot analysis of T47D nuclear ex...