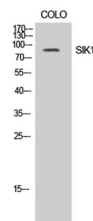


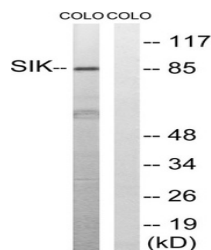
Product Datasheet

SIK1 antibody (orb767770)

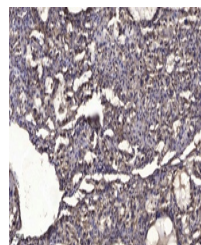
Description	Rabbit polyclonal antibody to SIK1
Species/Host	Rabbit
Reactivity	Human, Rat
Conjugation	Unconjugated
Tested Applications	ELISA, WB
Immunogen	The antiserum was produced against synthesized peptide derived from human SIK. AA range:148-197
Preservatives	PBS with 0.02% sodium azide and 50% glycerol pH 7.4.
Concentration	1 mg/ml
Storage	Store at -20°C. Avoid repeated freeze-thaw cycles.
Note	For research use only
Isotype	IgG
Clonality	Polyclonal
MW	85
Expiration Date	12 months from date of receipt.



Western Blot analysis of COLO cells usin...



Western blot analysis of lysates from CO...



Immunohistochemical analysis of paraffin...