

## Product Datasheet

### c-Fms (phospho-Tyr809) antibody (orb767720)

**Description** Rabbit polyclonal antibody to c-Fms (phospho-Tyr809)

**Species/Host** Rabbit

**Reactivity** Human

**Conjugation** Unconjugated

**Tested Applications** ELISA, IHC-P

**Immunogen** The antiserum was produced against synthesized peptide derived from human CSFR around the phosphorylation site of Tyr809. AA range:781-830

**Preservatives** PBS with 0.02% sodium azide and 50% glycerol pH 7.4.

**Concentration** 1 mg/ml

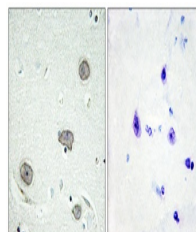
**Storage** Maintain refrigerated at 2-8°C for up to 2 weeks. For long term storage store at -20°C in small aliquots to prevent freeze-thaw cycles.

**Note** For research use only

**Isotype** IgG

**Clonality** Polyclonal

**Expiration Date** 12 months from date of receipt.



Immunohistochemistry analysis of paraffi...