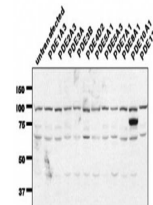


## Product Datasheet

### PDE7A antibody (orb76771)

<b>Description</b>	Rabbit monoclonal antibody to PDE7A
<b>Species/Host</b>	Rabbit
<b>Reactivity</b>	Human, Mouse, Rat
<b>Conjugation</b>	Unconjugated
<b>Tested Applications</b>	IHC-P, IP, WB
<b>Immunogen</b>	Synthetic peptide, corresponding to amino acids at the C-terminal of Human PDE7A
<b>Target</b>	PDE7A
<b>Preservatives</b>	Diluted serum
<b>Note</b>	For research use only
<b>Clonality</b>	Monoclonal
<b>Uniprot ID</b>	<a href="#">O08593</a> , <a href="#">P70453</a> , <a href="#">Q13946</a>
<b>Entrez</b>	<a href="#">5150</a> , <a href="#">81744</a> , <a href="#">18583</a>
<b>Dilution Range</b>	Optimal antibody dilution should be determined by titration, however as a guideline try; WB: 1/2000. Predicted molecular weight: 56 kDa
<b>Expiration Date</b>	12 months from date of receipt.



Western blot analysis of untransfected u...