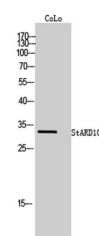


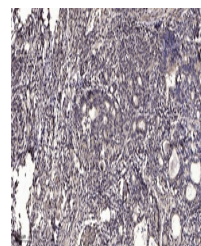
Product Datasheet

StARD10 antibody (orb767432)

Description	Rabbit polyclonal antibody to StARD10
Species/Host	Rabbit
Reactivity	Human, Mouse, Rat
Conjugation	Unconjugated
Tested Applications	ELISA, WB
Immunogen	Synthesized peptide derived from the Internal region of human StARD10.
Preservatives	PBS with 0.02% sodium azide and 50% glycerol pH 7.4.
Concentration	1 mg/ml
Storage	Store at -20°C. Avoid repeated freeze-thaw cycles.
Note	For research use only
Isotype	IgG
Clonality	Polyclonal
MW	33
Expiration Date	12 months from date of receipt.



Western Blot analysis of CoLo cells usin...



Immunohistochemical analysis of paraffin...