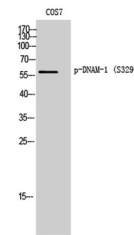


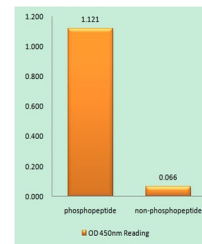
Product Datasheet

DNAM-1 (phospho-Ser329) antibody (orb767406)

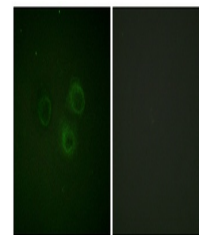
Description	Rabbit polyclonal antibody to DNAM-1 (phospho-Ser329)
Species/Host	Rabbit
Reactivity	Human, Monkey, Mouse
Conjugation	Unconjugated
Tested Applications	ELISA, IF, IHC-P, WB
Immunogen	The antiserum was produced against synthesized peptide derived from human CD226/DNAM-1 around the phosphorylation site of Ser329. AA range:287-336
Preservatives	PBS with 0.02% sodium azide and 50% glycerol pH 7.4.
Concentration	1 mg/ml
Storage	Maintain refrigerated at 2-8°C for up to 2 weeks. For long term storage store at -20°C in small aliquots to prevent freeze-thaw cycles.
Note	For research use only
Isotype	IgG
Clonality	Polyclonal
MW	60
Expiration Date	12 months from date of receipt.



Western Blot analysis of COS7 cells using...



Enzyme-Linked Immunosorbent Assay (Phosp...



Immunofluorescence analysis of A549 cell...