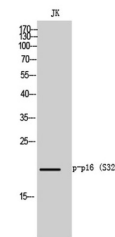


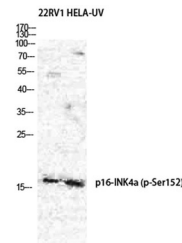
Product Datasheet

p16 (phospho-Ser326) antibody (orb767331)

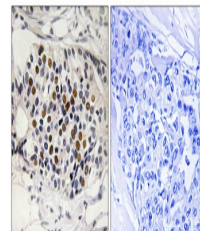
Description	Rabbit polyclonal antibody to p16 (phospho-Ser326)
Species/Host	Rabbit
Reactivity	Human
Conjugation	Unconjugated
Tested Applications	ELISA, IHC-P, WB
Immunogen	The antiserum was produced against synthesized peptide derived from human p16-INK4a around the phosphorylation site of Ser152. AA range:107-156
Preservatives	PBS with 0.02% sodium azide and 50% glycerol pH 7.4.
Concentration	1 mg/ml
Storage	Maintain refrigerated at 2-8°C for up to 2 weeks. For long term storage store at -20°C in small aliquots to prevent freeze-thaw cycles.
Note	For research use only
Isotype	IgG
Clonality	Polyclonal
MW	20
Expiration Date	12 months from date of receipt.



Western Blot analysis of JK cells using ...



Western Blot analysis of 22RV1 HELA cell...



Immunohistochemistry analysis of paraffi...