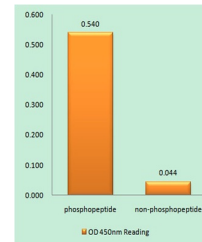


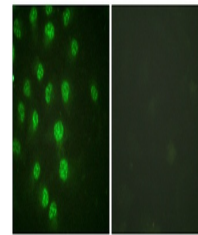
Product Datasheet

p57 (phospho-Thr310) antibody (orb767328)

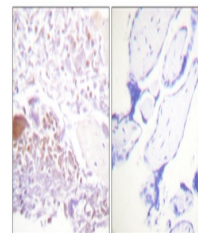
Description	Rabbit polyclonal antibody to p57 (phospho-Thr310)
Species/Host	Rabbit
Reactivity	Human, Mouse
Conjugation	Unconjugated
Tested Applications	ELISA, IF, IHC-P, WB
Immunogen	The antiserum was produced against synthesized peptide derived from human p57 Kip2 around the phosphorylation site of Thr310. AA range:267-316
Preservatives	PBS with 0.02% sodium azide and 50% glycerol pH 7.4.
Concentration	1 mg/ml
Storage	Maintain refrigerated at 2-8°C for up to 2 weeks. For long term storage store at -20°C in small aliquots to prevent freeze-thaw cycles.
Note	For research use only
Isotype	IgG
Clonality	Polyclonal
MW	32
Expiration Date	12 months from date of receipt.



Enzyme-Linked
Immunosorbent Assay
(Phosp...



Immunofluorescence
analysis of HUVEC
cel...



Immunohistochemistry
analysis of paraffi...