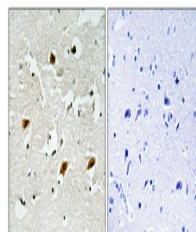


Product Datasheet

p27 (phospho-Thr157) antibody (orb767324)

Description	Rabbit polyclonal antibody to p27 (phospho-Thr157)
Reactivity	Human, Mouse, Rat
Conjugation	Unconjugated
Tested Applications	ELISA, IHC-P
Immunogen	The antiserum was produced against synthesized peptide derived from human p27 Kip1 around the phosphorylation site of Thr157. AA range:123-172
Preservatives	PBS with 0.02% sodium azide and 50% glycerol pH 7.4.
Concentration	1 mg/ml
Storage	Maintain refrigerated at 2-8°C for up to 2 weeks. For long term storage store at -20°C in small aliquots to prevent freeze-thaw cycles.
Note	For research use only
Isotype	IgG
Clonality	Polyclonal
Source	Rabbit
MW	22kD
Dilution Range	Immunohistochemistry: 1/100 - 1/300. ELISA: 1/5000. Not yet tested in other applications.
Expiration Date	12 months from date of receipt.



Immunohistochemical analysis of paraffin...