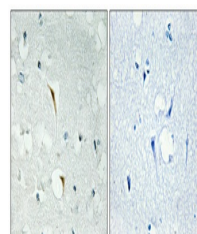


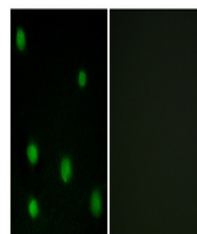
Product Datasheet

DEF-3 antibody (orb767308)

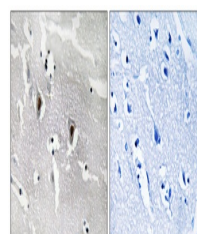
Description	Rabbit polyclonal antibody to DEF-3
Species/Host	Rabbit
Reactivity	Human, Mouse
Conjugation	Unconjugated
Tested Applications	ELISA, IF, IHC-P, WB
Immunogen	The antiserum was produced against synthesized peptide derived from human RBM6. AA range:991-1040
Preservatives	PBS with 0.02% sodium azide and 50% glycerol pH 7.4.
Concentration	1 mg/ml
Storage	Store at -20°C. Avoid repeated freeze-thaw cycles.
Note	For research use only
Isotype	IgG
Clonality	Polyclonal
MW	150
Expiration Date	12 months from date of receipt.



Immunohistochemical analysis of paraffin...



Immunofluorescence analysis of COS7 cell...



Immunohistochemistry analysis of paraffi...