

Product Datasheet

FADD (phospho-Ser191) antibody (orb767266)

Description Rabbit polyclonal antibody to FADD (phospho-Ser191)

Species/Host Rabbit

Reactivity Mouse

Conjugation Unconjugated

Tested Applications ELISA, IHC-P, WB

Immunogen The antiserum was produced against synthesized peptide derived from mouse FADD around the phosphorylation site of Ser191. AA range:157-206

Preservatives PBS with 0.02% sodium azide and 50% glycerol pH 7.4.

Concentration 1 mg/ml

Storage Maintain refrigerated at 2-8°C for up to 2 weeks. For long term storage store at -20°C in small aliquots to prevent freeze-thaw cycles.

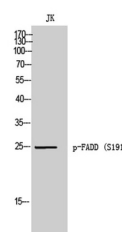
Note For research use only

Isotype IgG

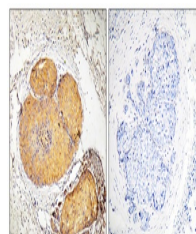
Clonality Polyclonal

MW 25

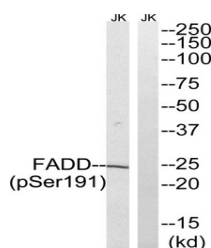
Expiration Date 12 months from date of receipt.



Western Blot analysis of JK cells using ...



Immunohistochemistry analysis of paraffi...



Western blot analysis of lysates from Ju...